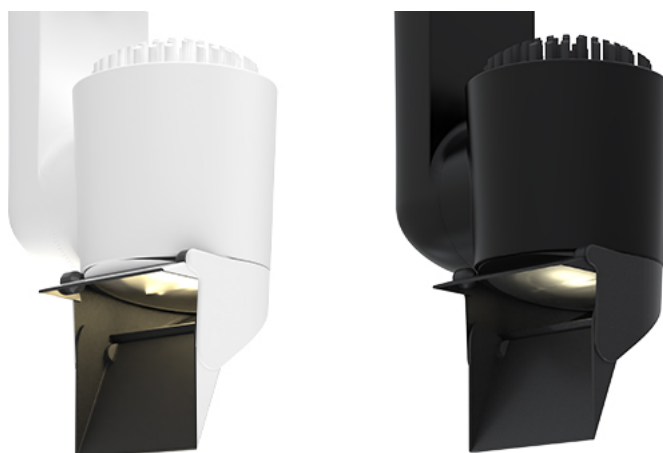


## JADE WALLWASH



The Jade WallWash is characterized by a particularly even beam with a minimal intensity difference in the light image. Thanks to an ingenious optical invention by the CLS R&D team, the Jade WallWash offers beautifully framed straight beams on the sides, making it easy to create an even image across a wall. To minimize unwanted annoying scattering of the light on the ceiling and on the floor, the Jade WallWash is designed with an ingenious top hat, with which illuminators can variably determine the "cut off" of the light beam.

**Categories:** [Jade Series](#), [Track fixtures](#), [Surface mounted](#)

## > Specifications

|                   |  |
|-------------------|--|
| Type              | Jade WallWash, Max. 30 Watt track spot                                   |
| Colour            | Black, white   |
| Material          | Coated aluminum  |
| Weight            | 740 gram   |
| Swivel            | 340° horizontal   350° vertical  |
| Optics            | Asymmetrical Beam  |
| Light source      | Bridgelux or Xicato  |
| Light output      | 880 lumen  |
| CRI               | ~90, ~98   |
| LED colours       | 2700K   3000K   3500K   4000K<br>1800K-4000K   2700K-6500K               |
| Power consumption | Max. 30 Watt   |
| Power supply      | 230 VAC  |
| Driver            | Driver included   Driver internal  |
| Dimming           | Mains dim   DALI   Casambi   DMX512   Wireless DMX   Local Dim + Casambi |
| Connection        | Track adapter, M10 bolt or ceiling mounting                              |
| IP rating         | IP 20  |
| Protection class  | 1  |
| Certifications    | CE   |

|          |                   |
|----------|-------------------|
| Lifetime | 50.000h           |
| LB Value | L90B10 at 50.000h |
| Warranty | 5 years           |

Remarks Top hat for zero glare

