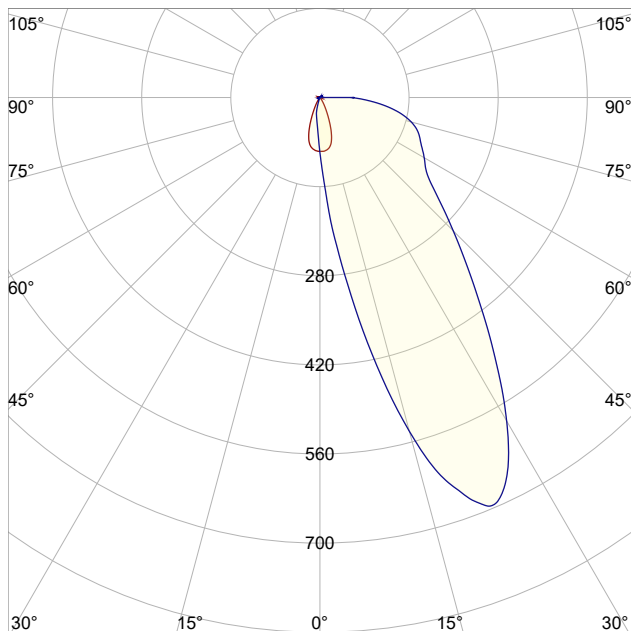
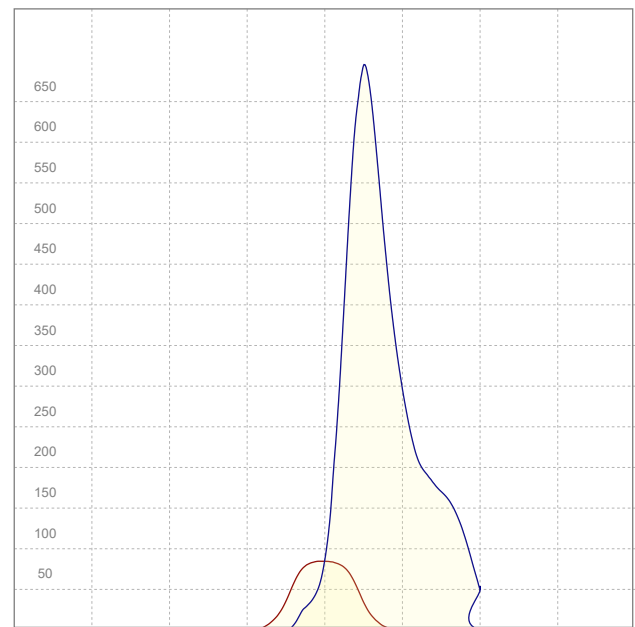


#### General Discription

Item number	T-W-XXX-1B-2790-A
Date and time	31-3-2025 12:00:10
CCT (Kelvin)	2694 K
Beam angle	31,6°
Luminous flux	457 lm
Efficiency	35 lm/watt
Weighted energy	12,9 kWh/1000h
Power factor	0,9
CRI (RA)	93,4
Fidelity index Rf	Rf 90,2
Gammut index Rg	Rg 104,2
Peak	695 cd



*Polar curve*



*Linear distribution diagram*

# LM-79

## Test Report

# LM79-TOPAZ-WALLWASH-2700K-CRI90

Beam details	1m	2m	3m	4m	5m																			
Lux*	83 lx	21 lx	9 lx	5 lx	3 lx																			
*measured at center of beam																								
Footcandles*	7,7 fcd	1,9 fcd	0,9 fcd	0,5 fcd	0,3 fcd																			
Beam width (meter)	0,6 m	1,1 m	1,7 m	2,3 m	2,9 m																			
Beam width (Feet)	1,9 ft	3,8 ft	5,6 ft	7,5 ft	9,4 ft																			
<b>Beam intensities</b>																								
1m	2m	3m	4m	5m	6m	7m	8m	9m	10m	11m	12m	13m	14m	15m	16m	17m	18m	19m	20m					
83lx	21lx	9lx	5lx	3lx	2lx	2lx	1lx	1lx	1lx	1lx	1lx	0lx	0lx	0lx	0lx	0lx	0lx	0lx	0lx					
3,3ft	6,6ft	9,8ft	13,1ft	16,4ft	19,7ft	23ft	26,2ft	29,5ft	32,8ft	36,1ft	39,4ft	42,7ft	45,9ft	49,2ft	52,5ft	55,8ft	59,1ft	62,3ft	65,6ft					
7,7fcd	1,9fcd	0,9fcd	0,5fcd	0,3fcd	0,2fcd	0,2fcd	0,1fcd	0,1fcd	0,1fcd	0,1fcd	0,1fcd	0fcd	0fcd	0fcd	0fcd	0fcd	0fcd	0fcd	0fcd					
<b>Intensities in 0° c-plane</b>																								
0°	2°	4°	6°	8°	10°	12°	14°	16°	18°	20°	22°	24°	26°	28°	30°	32°	34°	36°	38°					
83,0	84,6	84,5	83,8	82,6	80,7	77,5	72,9	66,1	57,5	47,7	37,9	29,2	22,0	16,3	11,9	8,2	5,3	3,1	2,0					
100%	102%	102%	101%	100%	97%	93%	88%	80%	69%	58%	46%	35%	27%	20%	14%	10%	6%	4%	2%					
<b>Intensities in 90° c-plane</b>																								
0°	2°	4°	6°	8°	10°	12°	14°	16°	18°	20°	22°	24°	26°	28°	30°	32°	34°	36°	38°					
83	117	164	222	282	354	431	507	575	628	664	690	690	667	631	586	539	491	447	406					
100%	141%	198%	268%	340%	427%	520%	611%	694%	757%	801%	832%	832%	804%	761%	707%	650%	592%	539%	490%					
<b>Intensities in 180° c-plane</b>																								
0°	2°	4°	6°	8°	10°	12°	14°	16°	18°	20°	22°	24°	26°	28°	30°	32°	34°	36°	38°					
83,0	84,4	83,8	82,7	81,2	79,0	75,6	70,6	63,8	55,4	46,0	36,4	28,0	21,0	15,7	11,4	7,8	5,0	3,2	2,0					
100%	102%	101%	100%	98%	95%	91%	85%	77%	67%	55%	44%	34%	25%	19%	14%	9%	6%	4%	2%					
<b>Intensities in 270° c-plane</b>																								
0°	2°	4°	6°	8°	10°	12°	14°	16°	18°	20°	22°	24°	26°	28°	30°	32°	34°	36°	38°					
83,0	64,3	50,3	41,4	35,1	30,4	26,4	20,4	12,7	6,4	1,9	0,3	0,2	0,3	0,2	0,2	0,3	0,2	0,2	0,2					
100%	77%	61%	50%	42%	37%	32%	25%	15%	8%	2%	0%	0%	0%	0%	0%	0%	0%	0%	0%					
<b>Beam angle 50%</b>					<b>Field angle 10%</b>					<b>Cutoff angle 2,5%</b>					<b>Intensity ratio in 120° cone</b>					<b>Intensity ratio in 90° cone</b>				
31,9°					75,2°					100°					79,9%					62,4%				



**CLS LED BV**  
 info@cls-led.com  
 www.cls-led.com

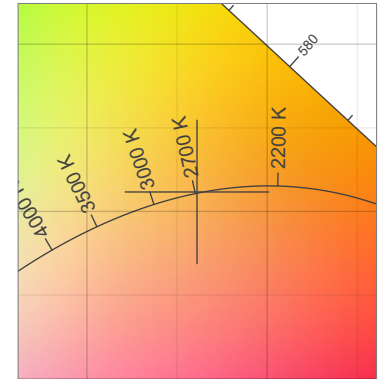
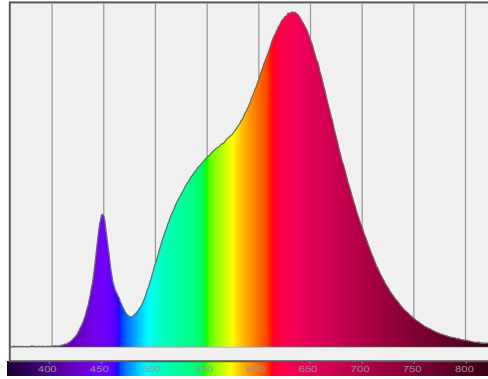
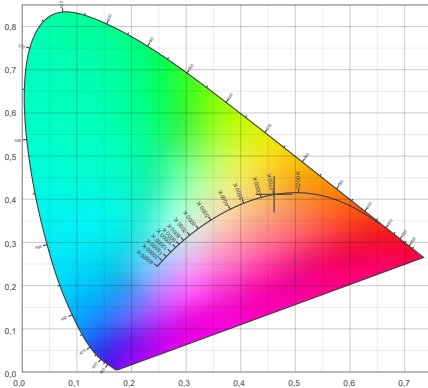
2021 CLS-LED BV. All rights reserved. Information subject to change without notice, CLS-LED BV and all affiliated companies disclaim liability for injury, damage direct or indirect loss, consequential or economic loss or any other loss occasioned by the use of, inability to use or reliance on the information contained in this document. No part of this document may be reproduced, in any form or by any means, without permission in writing from CLS-LED BV. Other legal information can be found in our General conditions, found on the back of your CLS-LED BV invoice, inside the CLS catalogue or on our website [www.cls-led.com/voorwaarden.pdf](http://www.cls-led.com/voorwaarden.pdf)

# LM-79

## Test Report

# LM79-TOPAZ-WALLWASH-2700K-CRI90

### Color details



CIE 1931

x: 0,461



Spectra

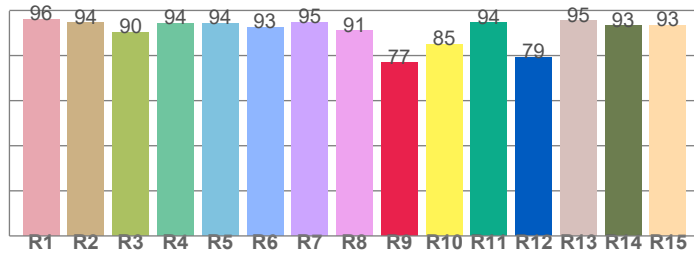
CIE 1931 ZOOM

2694 K

y: 0,412

$\Delta uv$ : 0,0003

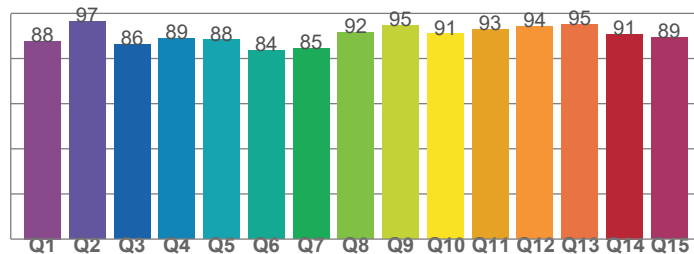
CRI: 93,4 (R1-R8)



CRI values, R1-R8 are used to calculate final CRI value

R1	R2	R3	R4	R5	R6	R7	R8
96,0	94,5	90,2	94,3	94,2	92,5	94,7	91,0
R9	R10	R11	R12	R13	R14	R15	
76,8	85,0	94,5	79,4	95,4	93,2	93,5	

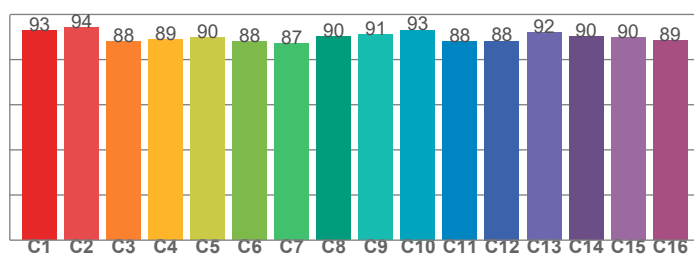
CQS: 89,5



CQS values

Q1	Q2	Q3	Q4	Q5	Q6	Q7	Q8
87,8	96,5	86,1	89,0	88,3	83,7	84,5	91,7
Q9	Q10	Q11	Q12	Q13	Q14	Q15	
94,6	90,9	92,8	94,3	95,2	90,9	89,4	

TM30: 90,2



TM30 values, 16 binned values out of total of 99 values

C1	C2	C3	C4	C5	C6	C7	C8
92,8	94,3	87,9	88,8	89,7	88,0	87,0	90,3
C9	C10	C11	C12	C13	C14	C15	
91,2	93,1	88,1	88,2	92,1	90,2	89,9	

### Color parameters

Color temperature	Color rendering index	Red component	Color fidelity	Color gamut	Color quality scale	Color coordinate cie 1931	Color coordinate cie 1931	Color coordinate	Color coordinate	Color deviation from black body
CCT	CRI	CRI R9	TM30 Rf	TM30 Rg	CQS	x	y	u	v	$\Delta uv$
2694 K	93,4	76,8	90,2	104,2	89,5	0,461	0,412	0,263	0,352	0,0003



CLS LED BV  
info@cls-led.com  
www.cls-led.com

2021 CLS-LED BV. All rights reserved. Information subject to change without notice, CLS-LED BV and all affiliated companies disclaim liability for injury, damage direct or indirect loss, consequential or economic loss or any other loss occasioned by the use of, inability to use or reliance on the information contained in this document. No part of this document may be reproduced, in any form or by any means, without permission in writing from CLS-LED BV. Other legal information can be found in our General conditions, found on the back of your CLS-LED BV invoice, inside the CLS catalogue or on our website [www.cls-led.com/voorwaarden.pdf](http://www.cls-led.com/voorwaarden.pdf)

# LM-79

## Test Report

# LM79-TOPAZ-WALLWASH-2700K-CRI90

### TM30 details

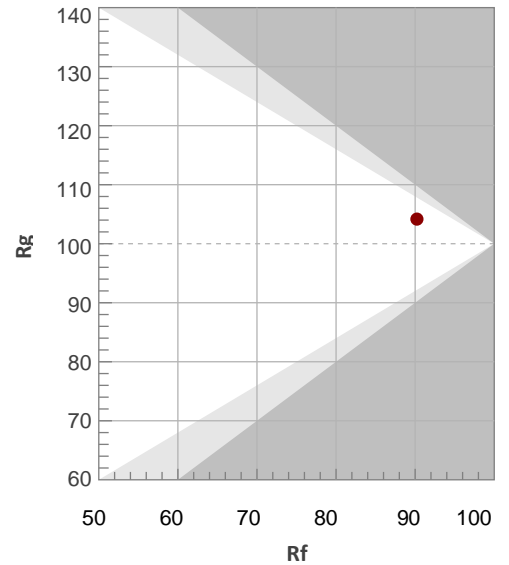
Rf 90,2

Fidelity index Rf

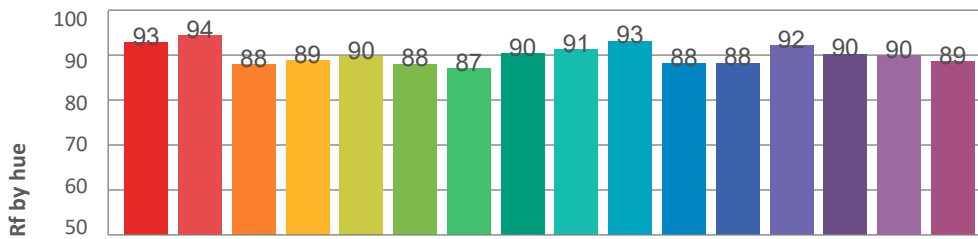
Rg 104,2

Gamut index Rg

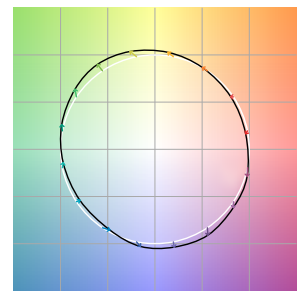
Hue Bin	R <sub>f</sub>	Graphic shifts (%)	
		Chroma	Hue
1	93	-3%	-3%
2	94	-2%	2%
3	88	0%	6%
4	89	3%	6%
5	90	7%	6%
6	88	9%	1%
7	87	6%	-6%
8	90	2%	-6%
9	91	-2%	-5%
10	93	-4%	1%
11	88	-2%	8%
12	88	4%	5%
13	92	6%	0%
14	90	7%	-4%
15	90	3%	-5%
16	89	1%	-9%



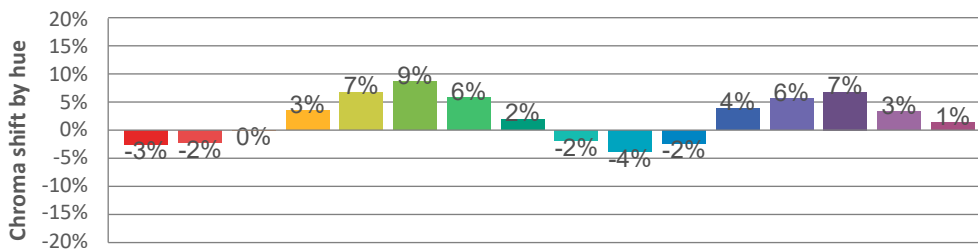
### Hue binH



### Color vector graphics



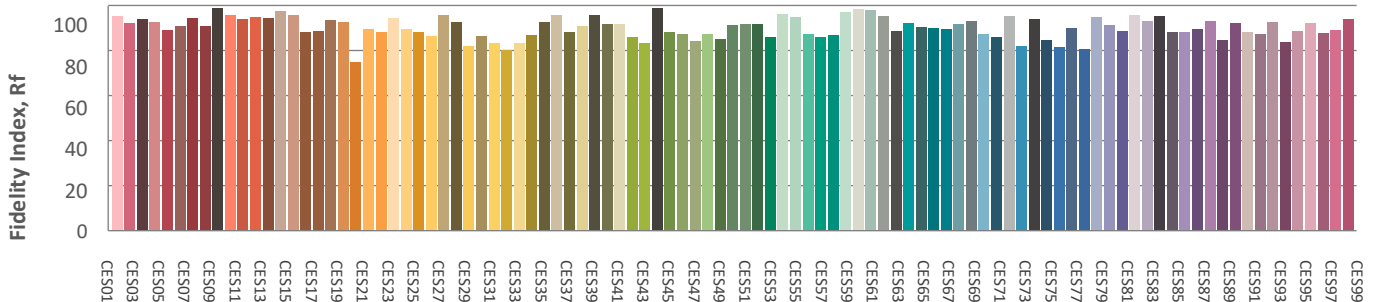
### Hue bin



### Color distortion graphics



### Color Evaluation Sample



CLS LED BV  
 info@cls-led.com  
 www.cls-led.com

2021 CLS-LED BV. All rights reserved. Information subject to change without notice, CLS-LED BV and all affiliated companies disclaim liability for injury, damage direct or indirect loss, consequential or economic loss or any other loss occasioned by the use of, inability to use or reliance on the information contained in this document. No part of this document may be reproduced, in any form or by any means, without permission in writing from CLS-LED BV. Other legal information can be found in our General conditions, found on the back of your CLS-LED BV invoice, inside the CLS catalogue or on our website [www.cls-led.com/voorwaarden.pdf](http://www.cls-led.com/voorwaarden.pdf)

